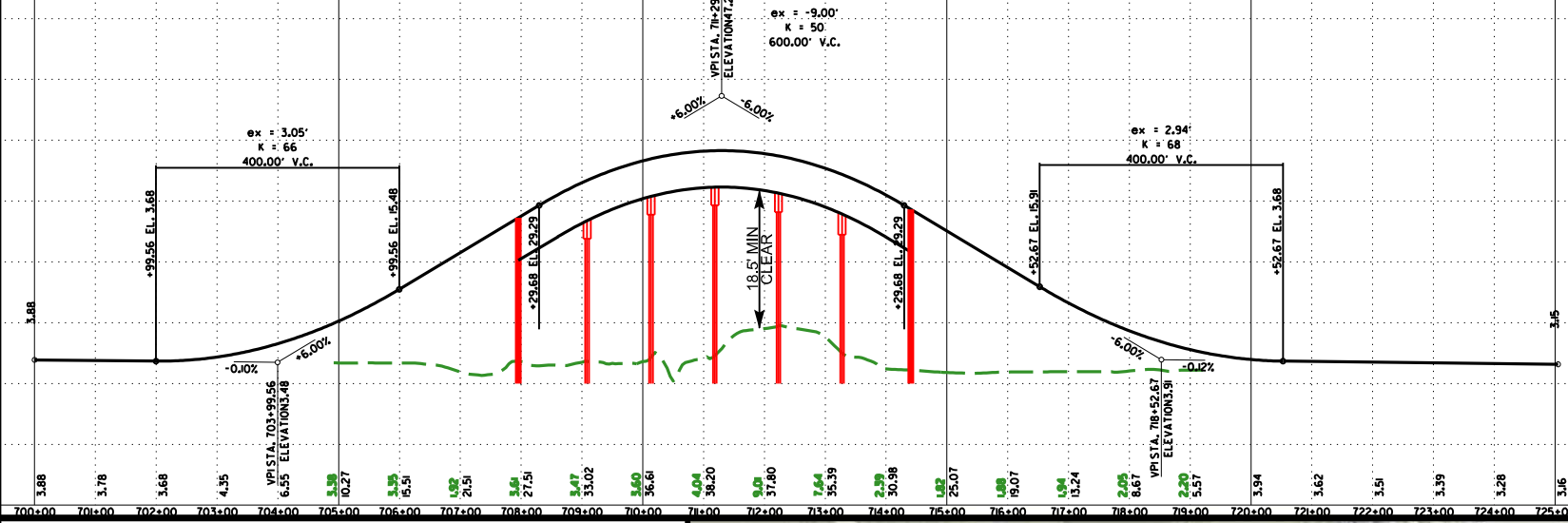
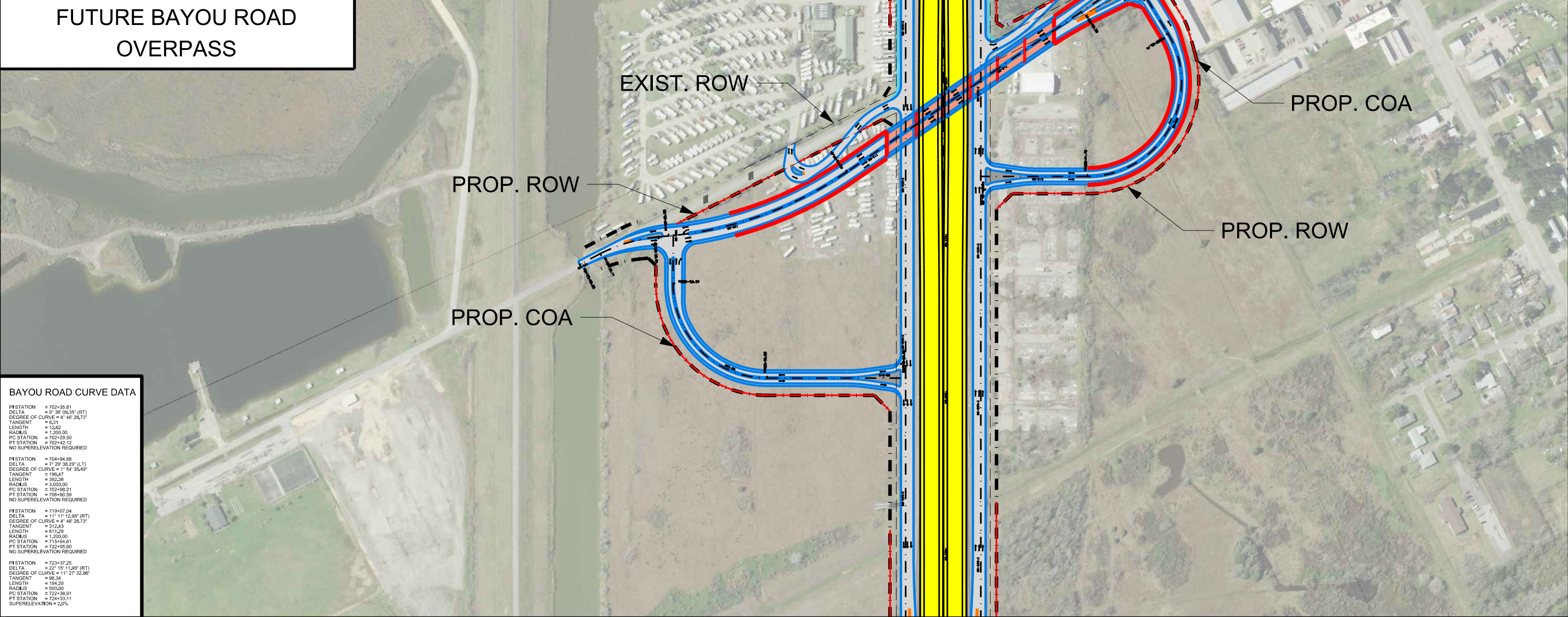


BAYOU ROAD PROFILE



FUTURE BAYOU ROAD OVERPASS



BAYOU ROAD CURVE DATA

PI STATION	= 702+35.81
DELTA	= 0° 30' 05.35" (RT)
DEGREE OF CURVE	= 4° 46' 28.73"
TANGENT	= 62.31
LENGTH	= 12.62
RADIUS	= 1,200.00
PC STATION	= 702+29.50
PT STATION	= 702+42.12
NO SUPERELEVATION REQUIRED	
PI STATION	= 704+94.88
DELTA	= 7° 29' 38.29" (LT)
DEGREE OF CURVE	= 11° 54' 35.49"
TANGENT	= 196.47
LENGTH	= 392.38
RADIUS	= 3,000.00
PC STATION	= 702+98.21
PT STATION	= 706+90.59
NO SUPERELEVATION REQUIRED	
PI STATION	= 719+07.04
DELTA	= 11° 11' 12.95" (RT)
DEGREE OF CURVE	= 4° 46' 28.73"
TANGENT	= 312.43
LENGTH	= 61.129
RADIUS	= 1,200.00
PC STATION	= 715+94.61
PT STATION	= 722+05.90
NO SUPERELEVATION REQUIRED	
PI STATION	= 723+37.25
DELTA	= 22° 15' 11.95" (RT)
DEGREE OF CURVE	= 11° 27' 32.96"
TANGENT	= 98.34
LENGTH	= 194.20
RADIUS	= 500.00
PC STATION	= 722+98.91
PT STATION	= 724+33.11
SUPERELEVATION = 2.0%	



**HOUSTON DISTRICT
PROJECT DEVELOPMENT**

**BAYOU ROAD
ALTERNATIVE**

ROADWAY: BAYOU RD
LIMITS FROM: N OF I-45
LIMITS TO: S OF I-45

COUNTY: GALVESTON
CSJ: 0500-04-104
DATE: 02/06/2018

